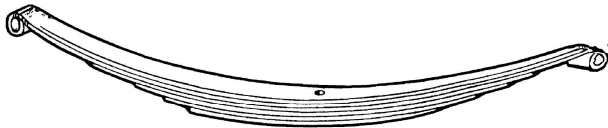


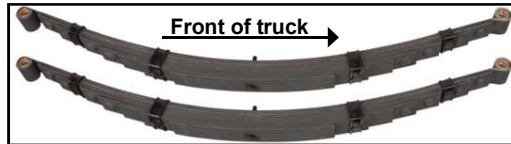
LOWERED SPRINGS, REAR. We offer every possible drop length, in every possible way. From Mono spring to full sets reconfigured to drop 3" Your desired Ride, handling and appearance are all considerations.

Keep in mind Stock height may not be where your truck is setting after 60+ years of wear. Check frame support connections, etc. for tiny cracks and other signs of wear at this time. Springs with two reversed eyes may need modified hangers

- **REAR MAIN LEAF ONLY**, Reversed Eye 2864-4852.....\$140.00 ea
 - **MAIN LEAF KIT**, both main leaves, poly ride, clamps & center bolts.
KIT 92836-4852..... \$295.00 kit
- to reduce your spring stack, keep bottom short spring, remove next one, keep one, remove one, and so on until you get where you want to be. Never go below 5 springs, watch for cracks or wear, add new main leaf with stock or reversed eye and down you go. Safely and better ride.



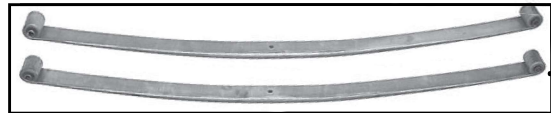
- **SHORT & SMOOTH STACK**, 5 leaf spring stack reconfigured, lower arch with reversed eyes and poly buttons.
Rear Short & Smooth *sold each* 2867-4852.....\$285.00 ea



- **POSIES SUPER SLIDE 3" DROP REAR SPRINGS**
Pair 2862-4852.....\$399.95 pr



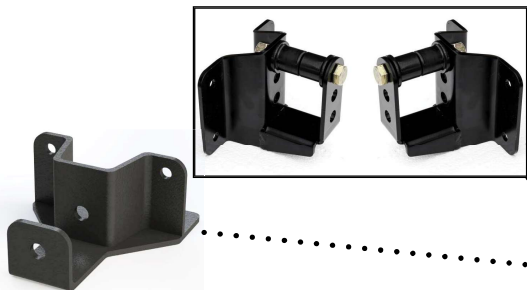
- **MONO LEAF SPRINGS, REAR**, 3/4" Thick in center
••• **REVERSED EYE 5" drop** 2892-4852B\$545.00 pr



- **STOCK EYE 3" drop**..... 2892-4852A\$545.00 pr

Stock Arch and Eye springs installed under axle will also lower truck a full 4" or more. Most of the time we are changing the rear axle when lowering so see axle conversion pieces for additional information.

ALL SPRINGS WE SELL HAVE EYE BUSHINGS INSTALLED,
note order pin and bushing kits without Eye bushings.
Stock hangers may need modified to clear springs.
U-BOLTS SEE PAGE 97
SPRING PIN & BUSHING KITS SEE PAGE 100
FRONT SPRINGS SEE PAGE 98-99
SPRING TIE PLATES SEE PAGE 100 & 102



- **REAR SPRING HANGER BRACKETS**
we make spring hangers for the 1953-56 truck and are working on special hangers to fit the 48-52. Please check website for them as we get them finished. The 1953-56 hangers can be used with some ingenuity or modifications so I am showing them here.
- **ADJUSTABLE** 2810-A\$95.00 pr
Hanger to frame bolt kit 84438 \$8.50 kit
- **NON ADJUSTABLE**, wraps frame 2811-A.....\$45.00 ea



- **REAR SWAY BAR**..... 2898..... \$189.00 kit
What a difference in handling!! Sway bars help eliminate body roll and control over & under steer. Kits come with mounts and hardware.