

With door glass in the up position, remove outside handle, latch, rear glass channel, and lock cylinder. This should leave door pull linkage hanging inside door.



Use the supplied template to mark and cut opening in door. Take the time to align template properly. (Please see blown up image on reverse side of this page).



With opening cut out, place new latch assembly in its proper location making sure to align the hole in the latch assembly with the hole on the inside of your door. On some doors this alignment hole may not align perfectly due to inconsistent stamping at the factory. However, you should make sure that it aligns horizontally. At this time you should place a 1/4 inch bolt in while marking the four corner holes to be drilled. Make sure at this time that the plate fits tightly against the door. Once the holes are marked, drill them out using a 9/32 inch drill bit. You can now bolt in the assembly.

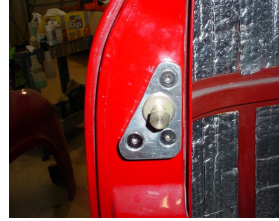


Next, remove plunger adjustment from exterior handle. Remove locking nut and screw plunger all the way down into the handle. Plunger may give resistance. Work the plunger in and out several times using a pair of pliers if necessary. Place door handle back in and check that the latch works properly with the handle by latching the door with your finger and pressing the exterior handle button. If latch fails to work the plunger may not be screwed in all the way or the lock mechanism is in the lock position.



Attach the inside door handle linkage to the latch. It may be necessary on some doors to slot the end of the linkage strap approx. 3/32 inch in order to achieve proper alignment with the latch release arm. This can easily be done while the strap hangs in the door with rotary bit or round file.

Once the linkage is attached to the latch, check the inside door handle for proper operation by triggering the latch with your finger and pulling the inside handle.



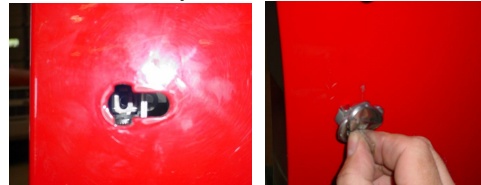
Place the new striker in the door jam and check for alignment.

Lock Cylinder Attachment Instructions:



Remove pin from stock lock cylinder. This is done by depressing the spring with a pocket knife or small screwdriver, then slide pin out.

Place spring on the Easy Latch lock cylinder pin and install pin back into lock cylinder.



Looking through the lock cylinder hole on the door you will see the slot the pin is to slide into. Make sure the pin is lined up and carefully install the lock cylinder.

Trouble Shooting:

Door handle will not depress:

Make sure the lock lever on the latch is in the unlock position.

Door will not latch:

Make sure plunger screw is all the way down.

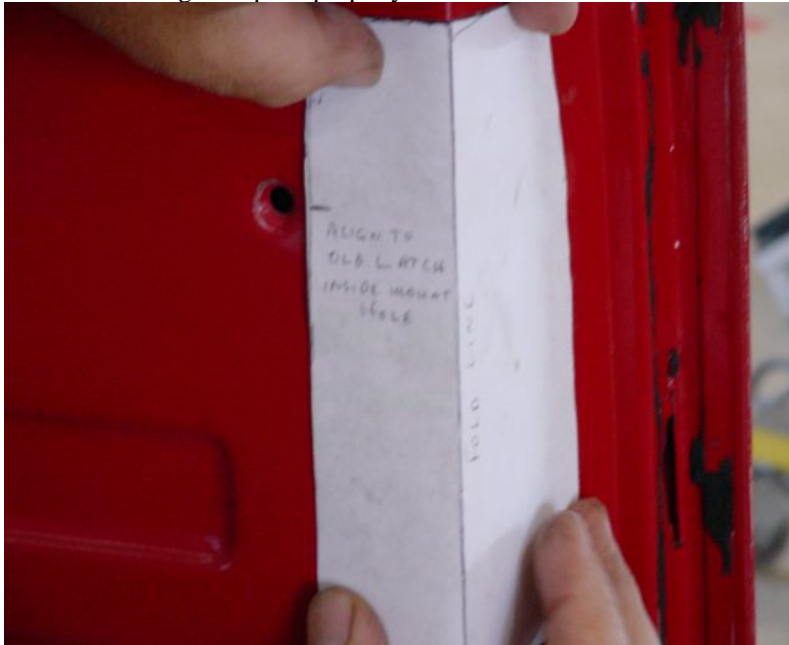
Make sure the lock lever on the latch is in the unlock position.

Latch will not align with the old latch assembly hole in the door:

Slot the hole in the door enough to secure latch with a 1/4" bolt.

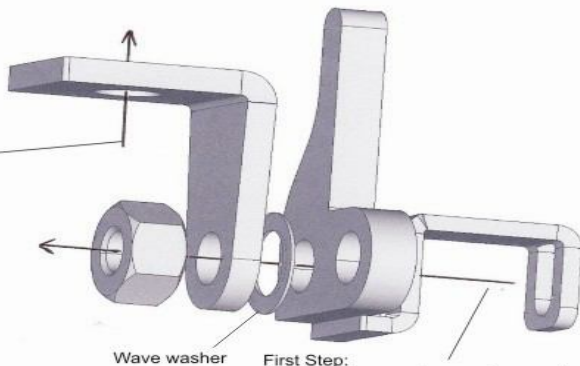
Any questions please call 1-866-987-4783 M-F 8-6CST

Make sure to align template properly:



Lock Assembly Instructions:

Second Step:
Attach locking assembly to
latch assembly using
supplied 1/4X28X3/8 bolt.
Applying thread lock is
recommended.



Wave washer

First Step:
Attach pieces as shown using supplied
1/4X20X3/4 bolt and 1/4-20 nut.
Tighten all the way and then back off
until lock mechanism turns smoothly,
but is not loose.

