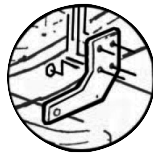
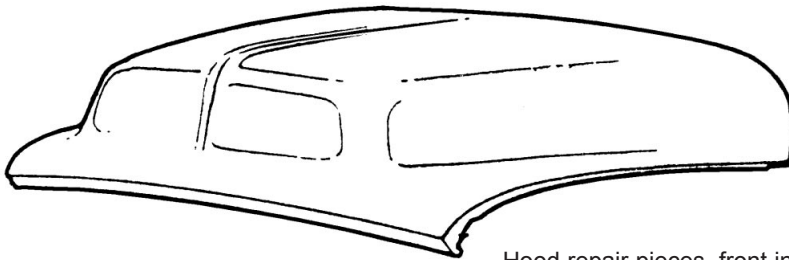


COMPLETE TILT FRONT END**COMPLETE FIBERGLASS DOG HOUSE FITS 1953-1956**

Fiberglass Dog house back on the market, requires crate and truck freight.
Nice quality and fit. Call for freight quote .6550 . . . \$1695.00
Hinges for Fiberglass not offered, simple L bracket, mount to air deflector area.

• **HINGES**, DYI, bolt sheet metal together, hinge to frame. . .1549. . . \$75.00 pr.

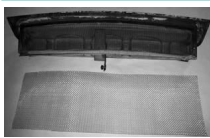
**HOOD
NEW STEEL HOOD**

Complete hood, accepts stock hinges, no side or front emblem holes 7759. . . . \$759.00

Boxing charge \$40.00

Ships truck freight only,
call for freight quote to your area

Hood repair pieces, front inner and outer sheet metal and side points, see pg 102

COWL VENT

USA



• **COWL VENT HINGES**, poorly fitting cowl vent often just hinges, they are a little flimsy, held on by tack welds, and take a lot of abuse. Sometimes just easier to put new ones on. 1953-550908-5355 . . . \$28.50 pr
19560908-56 . . . \$28.50 pr

• **COWL VENT HINGE ARM SCREWS**80902-SS . . . \$1.50 set
Polished Stainless Screws80902-PS . . . \$2.50 set
• **VENT REPAIR SCREEN**, repair your torn screen with new piece, comes with pattern,0904 . . . \$18.50 ea.

• **COWL VENT SEAL**0902 . . . \$9.50 ea.
COWL VENT SEAL INSTALLATION, remove cowl vent, clean seal lip, use even layer of good weatherstrip adhesive, (our #3125 or 3M cement, clamp down until set, clothespins are handy. Cowl vent can be adjusted both at the hinge screw point and most importantly at handle support bracket. To adjust, shift vent in elongated holes, if additional adjustment is necessary gently bend the cowl hinge arms. I said **Gently**. Weatherseal is **BEAR** to install, it fits but you'll swear it doesn't.

• **COWL VENT PATCH PANEL**, eliminating your cowl vent, here is a handy patch panel to weld in, then send in your old cowl vent and handle assembly for credit, amount depends on how much you send in.

COWL VENT PATCH PANEL, 1953-55 . . .0901-5355 . . . \$46.50 ea.
• COWL VENT PATCH PANEL, 1956, shown .0901-56 . . . \$46.50 ea.

COWL VENT SUPPORT DASH TO FIREWALL BRACE

1953-55 Includes installed taps0909-5355 . . . \$28.50 ea.
1956 Includes installed taps (shown) . . .0909-56 . . . \$28.50 ea.

• **SUPPORT BRACE MOUNTING BOLTS** . . .80910 . . . \$2.00 set

• **COWL VENT HANDLE KNOB, '56**1008 . . . \$6.00 ea.

Can be used with '53-55 handle by removing original rivets & knob

• **HANDLE TO BRACE BOLTS**80907 . . . \$1.00 pr.

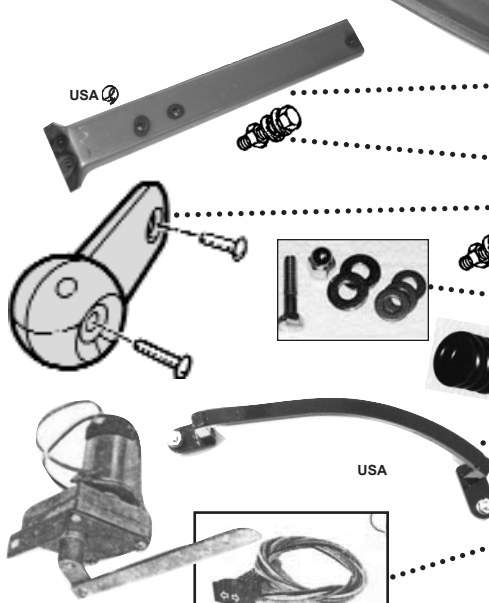
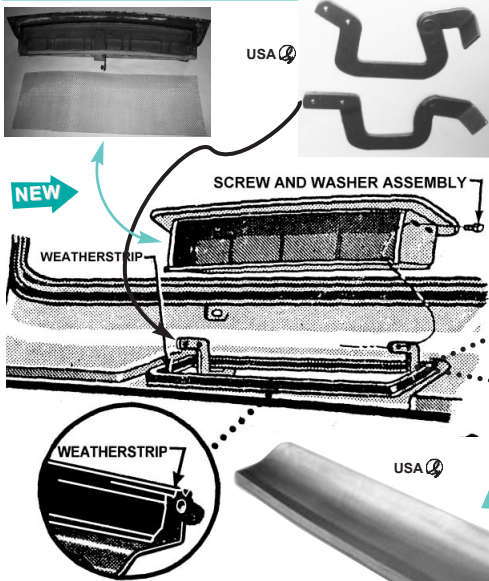
• **HANDLE BOLT & WASHERS**, goes through spring, includes acorn nut to cover threads, Polished Stainless80908-PS . . . \$3.90 kit

HANDLE TO "Moon" LIFT ARM bolts80905-PS . . . \$4.50 ea.

• **HANDLE TENSION SPRING**0922 . . . \$8.50 ea.

• **MODIFIED LIFT ARM**, sets arm over, is made to miss 1956 reversed under-dash wiper motor, or?3073 . . . \$15.00 ea.

• **POWER COWL VENT**0905 . . . \$185.00 kit
Motor, Switch, Wiring, & Bracket Assembly. Mounts to existing stock cowl vent brace, if missing we have new ones, see above. Send your old cowl vent handle and arm in for credit. Special aluminum clevis and arm installed and ready, closes tight. Not just a universal fit, this is made specifically for the truck.



**TILT FRONT END
HOOD & COWL VENT**

www.midfifty.com