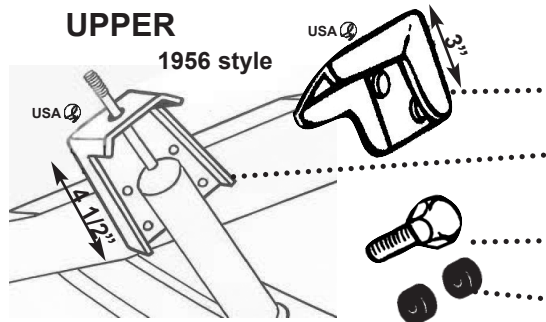


FRONT SHOCK MOUNTS & STUDS



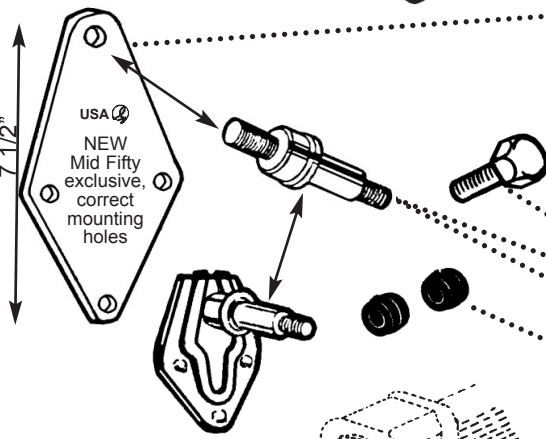
1956 SHOCKS ORIGINAL SHOCK MOUNTS are not available, we make replacements and extended mounts, shown on these 2 pages.

1956 UPPER SHOCK MOUNT, replaces original and uses stock frame holes, can be used front or rear 2402 \$29.95 ea.

1956 UPPER EXTENDED SHOCK MOUNT Taller by 1 1/2" for better travel, use 2 of the original holes or reposition for best shock length and angle, fits Right or Left front 2402-T \$32.50 ea.

SHOCK MOUNT TO FRAME MOUNTING BOLTS does 2 mounts 82402 \$6.50 set

POST BUSHINGS for post end (1 post) 2405-P \$4.95 set



FRONT or REAR UPPER EXTENDED SHOCK MOUNT, With this mount you can change over to more popular Eye style shocks. Goes on frame and raises mounting point, lengthens shock travel, use shock studs #2403 or check out complete kit below. New pieces have correct frame mounting holes, order by year of frame. On some 53-55 trucks this mount will hit inner fender, if so the 2402-T will work.

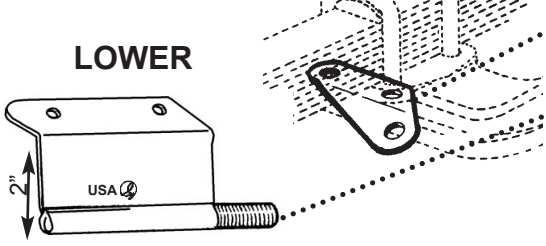
1953-55 Mounts straight up and down .. 2408-5355 .. \$28.00 pr.
1956 Mounts at angle 2408-56 \$28.00 pr.

SHOCK MOUNT ATTACHING BOLTS ... 82402 \$6.50 set

SHOCK STUD with bushings, replacement 2403 \$8.00 ea.

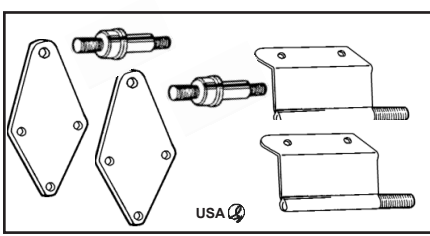
SHOCK STUD without bushings 2403-NO \$7.00 ea.

Goes in new or original upper mounts.
SHOCK EYE BUSHINGS (does 1 end of 1 shock) 2405-E \$2.50 pr.



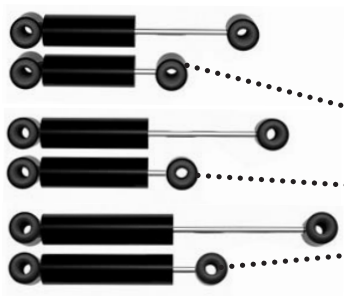
1956 FRONT LOWER SHOCK MOUNT, Stock style, uses post shock
PASSENGER SIDE 2407-R \$18.50 ea.
DRIVER SIDE 2407-L \$18.50 ea.

FRONT LOWER EXTENDED SHOCK MOUNT, Goes beneath front axle just like original, but, lowers mounting point and uses Eye style shock 2409 \$40.00 pr. works for 53-55 and 56, changes 56 style to Eye type shock. eliminates stock cast piece on 53-55



LONGER SHOCK MOUNTING KIT, See notes below. Includes 2 upper and 2 lower extended shock mounts, shock studs, and all mounting hardware. Lengthens shock travel. A must for lowered trucks, especially 1956. Buy the kit and save. longer shock, better ride. Kit does both sides, 1953-55 92408-5355 .. \$85.00 kit
1956 92408-56 \$86.50 kit
Always measure for correct shock **After** this is installed

The problem is, when an F-100 is lowered, especially the front of a 1956, there is not enough room for any shock travel and even fewer decent shocks to choose from. The solution for lowered trucks is to convert the post-post shock to an eye-eye shock and lengthen mounting locations. We have a couple ways to help with this. Upper mount (2408) is taller and uses a shock stud. Lower mount (2409) is dropped, shock stud is part of it. This means you will have more travel distance with a longer shock, longer shock equals better ride.
ALWAYS DETERMINE CORRECT SHOCK BY RIDE HEIGHT!



SHOCKS: 180 PSI nitrogen gas cylinder, made for lowered trucks.
Min 9.00 Max 13.50 2440-EE \$49.00 ea.
Min 10.00 Max 15.50 2441-EE \$49.00 ea.
Min 11.75 Max 18.50 2442-EE \$49.00 ea.
Min 12.75 Max 20.5 2433-EE \$49.00 ea/
Post ends are available if needed, see web or call.

To Measure RIDE HEIGHT, remove any existing shocks, set truck level with **all components installed** or accounted for. Measure from lower shock mounting point (center mounting stud or shock eye) to upper mounting point (center mounting stud or shock eye) this is ride height. **RENT A SHOCK-MOCK UP TOOL, call for details**