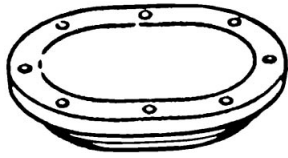


STOCK BRAKE PIECES



MASTER CYLINDER FLOOR HOLE COVER . . .0517 \$12.00 ea.



MASTER CYLINDER CAP, STEEL0512-C \$28.50 ea.
 MASTER CYLINDER CAP GASKET0512-G \$2.50 ea.
 PLASTIC CAP, does not need gasket . . .0512-CP \$8.75 ea.



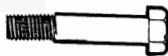
MASTER CYLINDER to arm EYE BOLT . . .0521 \$15.00 ea
 MASTER CYLINDER PUSH ROD0512-P \$12.95 ea.



MASTER CYLINDER, new not rebuilt0512 \$98.50 ea.



MASTER CYLINDER BOOT0512-B \$3.50 ea.



MASTER CYLINDER MOUNTING BOLTS . . .80512 \$3.90 pr.



COMPLETE MASTER CYLINDER KIT90512 \$109.00 kit
 Includes: master cylinder, cap, gasket, push rod & boot



MASTER CYLINDER REBUILT KIT0513 \$19.50 kit

MASTER CYLINDER & BRAKE HOSE COPPER WASHERS

Thicker one, goes at master cylinder . . .0515-2 \$1.75 ea
 Thinner one, goes at bolt fitting0515-1 \$1.75 ea.
 Set of 2, (large and small)0515 \$3.00 set



3 HOLE FITTING (at master cylinder)0516 \$16.75 ea.
 3 hole fitting is bigger on a 3/4 ton, order . .F2-0516 \$18.50 ea.



COPPER WASHER, Thinner one0515-1 \$1.75 ea.
 Set of 2, (large and small)0515 \$3.00 set



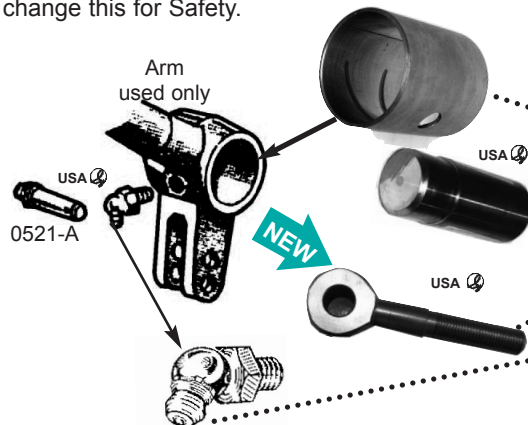
STOP LIGHT SWITCH BOLT0514 \$8.00 ea.

BRAKE LIGHT SWITCH, Stock0518 \$6.00 ea
 This switch has been around for years & requires 60-100 lbs of pressure to activate, often the cause of delayed brake lights or wild goose chases through wiring system. Does not matter which side wires go on, this is a simple on-off pressure switch. Wiring goes from here to headlight and turn signal switch **Better bet** is the new low pressure switch below which requires only 20-50 lbs pressure to activate

STOP LIGHT SWITCH CONNECTORS . . .80518 \$.75 pr

New, Even Faster and accepts stock connectors
 and accepts stock connectors
 If you change nothing else,
 change this for Safety.

LOW PRESSURE BRAKE SWITCH0518-LP \$24.00 kit
 Mounts & looks like stock switch, standard 1/8" pipe thread.
 Accepts silicone fluid, which the old one does not.



ARM TO EYE PIN0521-A \$7.50 Ea.

BRAKE ARM BUSHING0528 \$12.50 ea.

BRAKE ARM BUSHING TOOL0529 \$9.50 ea.
 makes removal and install much easier, cheaper than ruining bushing

ARM TO MASTER CYLINDER EYE BOLT . . .0521 \$15.75 ea

BRAKE ARM ZERK (grease) FITTING . . .80510 \$2.00 ea