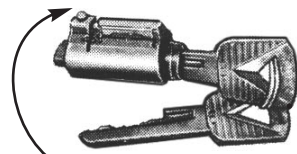
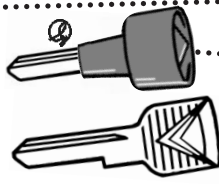
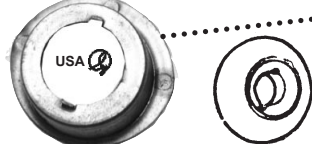
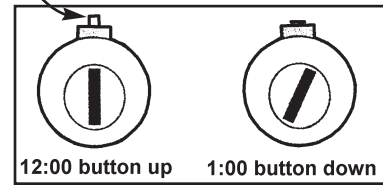


-**IGNITION SWITCH**2904 \$20.00 ea.
1953 will need a new bezel and hole may need enlarged
-**IGNITION SWITCH WIRE ENDS KIT** 82904 \$2.50 kit.
Wire connectors, switch nuts & wiring instructions
-**IGNITION SWITCH RETAINER**2905 \$10.00 ea.
New reproduction now available!!! Goes behind dash on ignition switch.
Assemble like this, Switch, Spring, Retainer, Dash, Bezel.
-**IGNITION SWITCH BEZEL**1033 \$7.50 ea.
Original bezel had no lettering.
-**IGNITION KEY KNOB**, key goes in knob, pop it in the ignition and it
looks like just another knob. Neat! Blank key or we can cut to
match existing keys, Stock knob1009 \$10.00 ea
Stock key, Aluminum Knob1009-AP \$15.00 ea.
-**IGNITION KEY**1138 \$3.00 ea.



Also See Door Lock Page 96 & 101

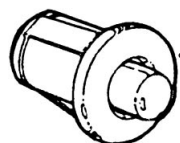
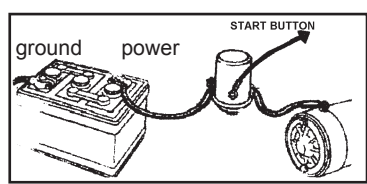
-**IGNITION KEY CYLINDER AND KEYS** ...2906 \$16.50 ea.
This set is included in some door lock sets see page 96 & 101



INSTALLATION: Check small spring in center of angled slot in bottom of key way. Make sure it is not sideways. Adjust slot slightly if necessary. Insert key cylinder, push in and turn key from 1 o'clock position to 12 o'clock. Button should pop up into hole in top of switch. Remove key. **REMOVAL:** Turn key to 1 o'clock position and push button down. Key should lock in that position, Pull complete cylinder out.



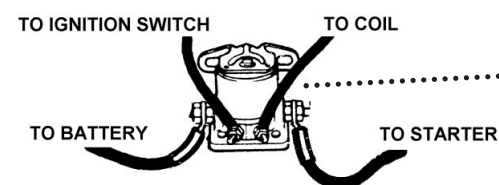
-**IGNITION SWITCH COMPLETE KIT** Includes Switch, Retainer, Bezel,
Key Cylinder, Keys and Instructions92904 \$54.50 kit



-**STARTER BUTTON**
Starter Button can also be used with 12 volt switch above is a good
momentary deterrent for unknowing would be thieves.
- 12 VOLT 2 Terminals, NEGATIVE GROUND2907 \$10.00 ea.
- 6 VOLT, CHROME, POSITIVE GROUND2907-PG \$9.50 ea.
- Uses original style 3 post solenoid6V-3225 \$18.00 ea.

-**STARTER BUTTON WIRE ENDS KIT**82907 \$1.00 kit

-**12 VOLT CHROME GROUNDING BUTTON AND SOLENOID KIT**
Must be installed together92907 \$39.65 kit



-**STARTER SOLENOID**
- 12 VOLT3225 \$14.00 ea.
- 6 VOLT6V-3225 \$19.50 ea.

-**NEUTRAL LOCK OUT SWITCH**2924in.process
Replacement for original automatic columns only
For any other column see Automatic shift senders on page 42

-**NEUTRAL LOCK OUT SWITCH WIRING** ..3275-NS \$20.00 ea.

OVERDRIVE SWITCH, See Speedometer Page 40

-**RESISTOR**3227 \$19.50 ea.

-**VOLTAGE REGULATORS**
- 6 VOLT REGULATOR6V-3219 \$66.50 ea.
- 12 VOLT REGULATOR3219 \$65.00 ea.

-**STARTER, BATTERY CABLE BRACKET & GROMMET**
- BRACKET & GROMMET SET (Zinc Plate) ..3215 \$10.00 ea.
- CHROME BRACKET Only3217-CH \$12.50 ea.
- GROMMET Only3216 \$3.50 ea.

-**CABLE BRACKET MOUNTING HARDWARE**
- BOLT & ACORN for Firewall83215-F \$2.50 set
- POLISHED SCREW for Inner Fender ...83215-I \$1.00 ea.
- Bolt and Acorn can also be used on inner fender, enlarge hole slightly.

