

ROUND TAIL LIGHT BODY, comes with or without license lens. Light had Plastic lens, Lots of earlier lights had glass lens with stainless chrome trim. We offer both since our Sister store Classic Haulers stocks for her '48-52 builders & some of our '53-56 guys like them as well. Round tail light body's are not interchangeable, ones for plastic lens are listed here, the ones with glass lens are listed as complete assemblies.

ROUND TAIL LIGHT BODY ONLY,

- Includes pigtail but no lens or bulb, order 6V or 12V bulb separately
- BLACK BODY, SOLID, NO license lens2204-B . . . \$20.00 ea.
- BLACK, WITH LICENSE LENS2204-BLT . . \$20.00 ea.
- POLISHED Stainless, NO license lens2204-P . . . \$25.00 ea.
- POLISHED Stainless, WITH license lens . . .2204-PLT . . \$25.00 ea.

ROUND LENS GASKET2203-GSK . . \$1.50 ea.

PLASTIC ROUND LENS, this is correct lens for all 1953-56 trucks that used round lights2203 . . . \$9.00 ea.

LENS SCREWS, Polished Stainless82206-PS . . \$2.50 set

ROUND EARLY GLASS LENS & STAINLESS RETAINER

Shown with blue dot, not included, see below for blue dot and tool.

ROUND LENS, GLASS2203-GLS . . \$6.50 ea.

ROUND LENS, With LED's2203-LED . . \$32.50 ea.

LED LENS & LICENSE LENS combo2203-RW . . \$38.50 ea.

ROUND GASKET, Use 2 per light2203-GSK . . \$1.50 ea.

GASKET for License Light2218-RG . . \$2.00 ea.

POLISHED STAINLESS RETAINER2203-SR . . \$8.00 ea.

GLASS BLUE DOTS, 2 W/Chrome Rings2217-GL . . \$10.00 set

BLUE DOT INSTALL TOOL, diamond tipped . .80109 . . . \$9.00 ea.
Drills Glass or Plastic Lens.

Round Lights are small and Glass is dark, consider high power bulbs or better yet new LED's and check out brake light pulsater.

BULB, CLEAR2260 . . . \$1.50 ea.

BULB, CLEAR HIGH POWER2262-HPC . . \$5.50 ea.

BRAKE PULSATER, 300 pulses per minute. simple, insert in brake light wire, use standard or LED bulbs, no additional power, 1.75 x .90 x 1.12, fits most anywhere. Added safety!!2922 . . . \$37.50 ea.

LICENSE PLATE BRACKET, correct mounting holes.

BLACK2206-BL . . . \$10.00

POLISHED STAINLESS2206-PS . . . \$18.00

Correct bolt hole spacing, not version that does not fit.

LICENSE PLATE FRAME 1953 shown, All available

Order by year2227-(YR) . . . \$10.00

LICENSE PLATE BACKING COVER for FRAMES,

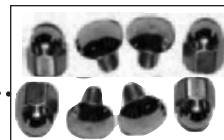
Fits above & similar license plate frames. If you add a frame, normal licence plate backs do not fit, so I made this.

Taller, Polished Stainless2226-TALL . . . \$16.50

LICENSE PLATE BACK COVER Polished Stainless

SMOOTH2226 . . . \$10.00

LOUVERED, 2 ROWS2226-LV . . . \$15.00



Lighted Bolts
2223-LD . . \$12.50

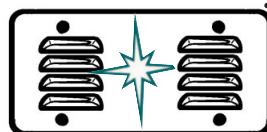
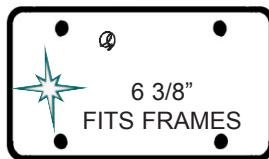


LICENSE PLATE BOLT & ACORNS

4 Chrome Bolts & 4 Acorns . . .82229 . . . \$8.50

LICENSE PLATE BULLET BOLT SET. . 2229 . . \$10.00

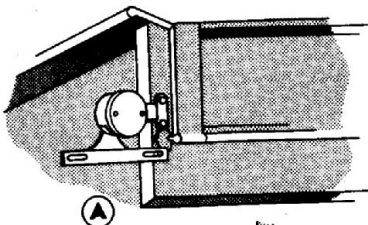
8 Bullets & hardware, YOU NEED 8 PIECES BECAUSE BOTH SIDES SHOW!



9 LICENSE PLATE BRACKET (1956 F-100 Pick Up Trucks)

The correct installation of the license plate bracket on the subject truck is as follows:

Install the license plate bracket as shown in view "A" Fig. 1, when the truck has a rear bumper.



Copy of original service bulletin issued by ford in 1956. Original license plate fell behind bumper and under bed . Some trucks came with only one light and without turn signals as they were not required in some states.

ROUND LIGHTS & LICENSE PLATE

