

## Q&A DIFFERENCES IN AIR CONDITIONING KITS:

**OLD AIR** is somewhat easier to install in original location.

**OLD AIR** leaves more glove box, **VINTAGE AIR** includes small, about 2 1/2 inches only, glove box.

**VINTAGE AIR** comes with underdash black plastic panel, some like it, some hate it, no discount without it.

**OVAL SWITCH PANEL OR ROUND LOUVERS** will not fit in the black plastic underdash panel, **will** fit in **XTEND-A-DASH** **OLD AIR** unit shows a little more but looks more like stock heater.

**DRYER** is mounted on condenser in **VINTAGE AIR KIT**, Dryer can be mounted separately with **OLD AIR KIT**.

**BOTH INSIDE KITS** can be installed and used as heat only indefinitely for trucks being driven.

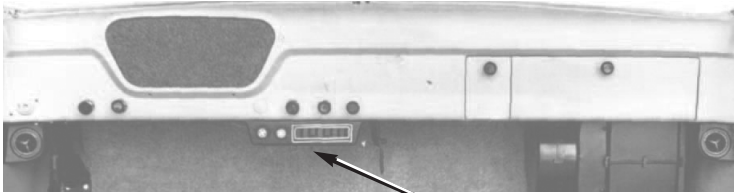
**BOTH KITS** are set up for 134a refrigerant, R12 is available, just ask but you do not want it. Refrigerant is not included.

**VINTAGE "SERVO" SWITCHES** are not compatible with **OLD AIR UNITS**, use **OLD AIR ELECTRIC** Controls. **ADD-ACE** **FOR A STOCK LOOK**, use rotary switches with stock knobs in the dash, hide louvers under the dash.

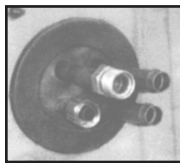
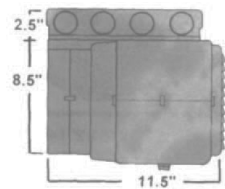
**VENTS**, prices listed are for Each vent, same price by itself or with kit. Kits come with plastic non-directional vents.

Keep in mind if you want Directional and/or Closeable vents, often you might not want cold air blowing on you.

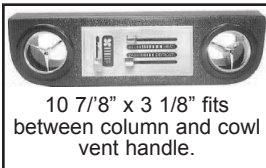
*CUSTOM KICK PANELS WITH AC LOUVERS are available, see PAGE 15 & 22*



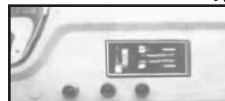
**OLD AIR KITS**, this unit is easy to install, mounts in original heater holes, lines can exit through original motor hole, includes grommet, or go through kick panel for a clean firewall (add K to end of part number) Automatic Dehumidified defrost. shown with standard switching and round louvers in a 1953-55 truck. See all the switching and louver options below.



mounts in original heater motor holes.



10 7/8" x 3 1/8" fits between column and cowl vent handle.



**INSIDES KIT**, Firewall exit, includes grommet. cable controlled.

**ROTARY SWITCHES** Includes center pod & side louver pods as shown.

1953-55, Round side louvers .....5232-5355 ..... \$550.00 kit

1956, Rectangle side louvers .....5232-56 ..... \$550.00 kit

Add your choice of switches and louvers below to use with in dash mounting or extended dash. Our favorite is our extended dash with 2 round louvers, billet oval controls and center louver hidden behind dash. Other accessories available, just no room to list here. For Kick Panel Exit order #5233

**ADDITIONS AND UPGRADES**, prices are for ADDITION TO KIT ONLY

**RECTANGLE SLIDE CONTROLS**

HORIZONTAL, Aluminum .....ADD-5010-HRA ... \$125.00 kit

HORIZONTAL, anodized Black .....ADD-5010-HRB ... \$125.00 kit

VERTICAL, Aluminum, not shown .....ADD-5010-VRA ... \$125.00 kit

OVAL SLIDE CONTROL, Aluminum .....ADD-5009-OVA ... \$125.00 kit

OVAL SLIDE CONTROL, Anodized Black .....ADD-5009-OVB ... \$125.00 kit

**ELECTRIC CONTROLS** .....ADD-5010-E ..... \$100.00 kit

**KICK PANEL EXIT**, hoses go through kick panel area and out along, or hidden under inner fender, ADD .....ADD-5001-KX ..... \$75.00 kit

**VENTS SHOWN CAN BE ADDED TO VINTAGE AIR OR OLD AIR KITS**

**VENTS**, Prices are each, and the same if purchased separately or with kits.

\*note; vent controls air direction and/or volume, I like to be able to close the vent or direct it toward or away from me. Hot flashes I guess.

ROUND PLASTIC with chrome triangle, nice piece, stationary, this one is included at no charge in Kits ... .5017-R2 ..... \$14.00 ea

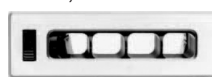
ROUND PLASTIC, Black, closes & directs .5014 ..... \$14.50 ea.

ROUND BILLET ALUMINUM, directs ... .5018-AL ..... \$92.50 ea.

ROUND SPIDER, ALUMINUM, directs ... .5019 ..... \$119.00 ea.

OVAL, Billet aluminum, directs ... .5015-D ..... \$99.95 ea

OVAL, Billet aluminum, stationary ... .5015 ..... \$75.00 ea.



RECTANGLE, Aluminum, Nice and "Closes"

6" long ..... .5020-6 ..... \$95.00 ea

4" long ..... .5020-4 ..... \$95.00 ea.

PLASTIC, not shown .5016-2 ..... \$10.00 ea.

**MAKE IT A COMPLETE KIT BY ADDING UNDER-HOOD KIT BELOW**

**COMPLETE KIT**, Pick your choice of above inside unit and add an Under Hood kit below. Kit includes, Compressor, Hose Kit, Condenser, Dryer.

\*\*Engine Compressor Brackets \*most Ford brackets are additional cost, so we reduced price of kit, order correct bracket separately, see previous page

With Plain Compressor & dryer .....5240-BK ..... \$485.00 kit

With Polished Compressor, Chrome dryer ... .5241-CH ..... \$555.00 kit

Compressor bracket for engine, see previous page

