

# WEATHERSTRIPPING, GLASS

## WE STOCK ALL BRANDS OF RUBBER

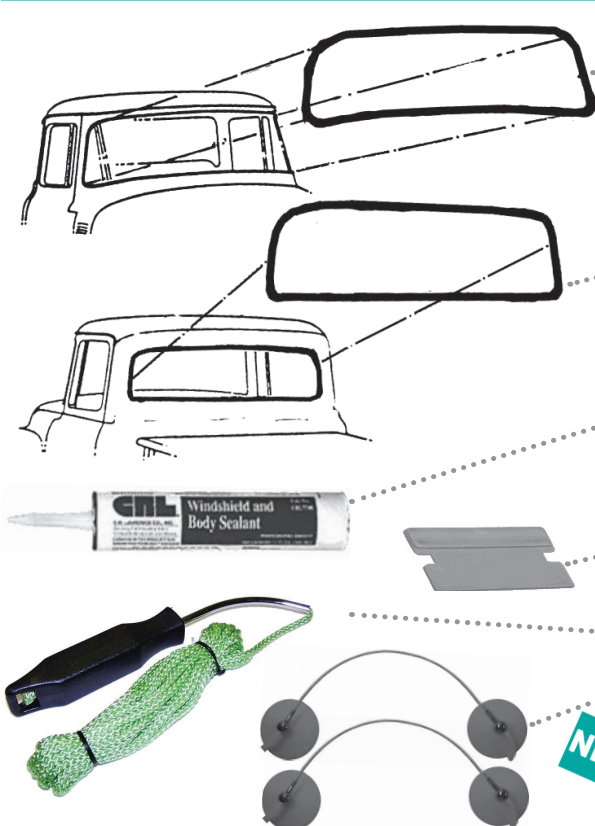
If you have a question give us a call. Many are offering imported "econo" rubber these days. We must offer to Complete, however if you live in a hot or arid area or plan on keeping the truck for a long time we do not advise it. Some of our custom builders like it for first fit, then put good stuff on after paint.

## NEED IT ALL RUBBER AND ANTI-RATTLE KIT

Windshield, rear window, vent rubber seals, outer door seals, polished stainless division bars with vent seats, lower felt wipes & upper & back channels, all with polished stainless bead, hardware, glue & instructions. See page 83

## COMPLETE GLASS KIT

Includes windshield, rear glass and solid side kit in your choice of colors. Saves \$50.00 off individual pieces. See web or call



### WINDSHIELD WEATHERSTRIP

Windshields go in from the outside. Glass, rubber, trim, then in truck.

- 1953-55 .....3100-5355 ..... \$39.00 ea
- 1956 with groove for trim .....3101-56G..... \$39.00 ea
- 1956 without groove .....3102-56N..... \$39.00 ea

### ECONO WINDSHIELD SEALS, IMPORTED

- Econo, 1956 with groove .....3101-E56G ..... \$30.00 ea
- Econo, 1956 no groove .....3102-E56N ..... \$30.00 ea

### REAR WINDOW WEATHERSTRIP

- 1953-56 standard window .....3103..... \$25.00 ea
- 1956 big back window .....3104-BB..... \$45.00 ea
- 1956 big back with no trim .....3104-NO ..... \$45.00 ea
- Panel rear windows .....P-3132 ..... \$58.50 pr

### BUTYL WINDOW SEALER

Seals rubber correctly, Windex or soap up a razor blade & rag, run Butyl around weatherstrip, between rubber and glass & wipe immediately for clean seal. We do not advise using new silicone or adhesive type windshield sealers.

### PLASTIC RAZOR BLADE

Set of 5. Handy for putting on window sealer, see above, instant "finger-nail". One of Sy's favorite things

### WINDOW INSTALL ROPE

What a help, tool feeds correct size rope into rubber groove

### WINDOW GLASS HOLDER SUCTION CUPS

Another handy tool, for holding glass up while you work inside the door

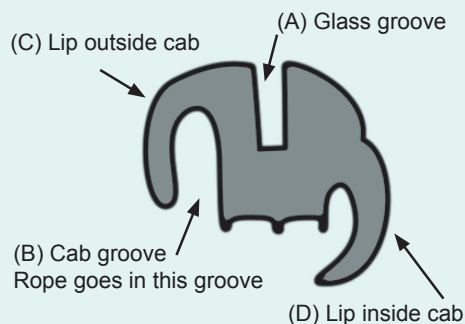
### WINDOW INSTALL TOOL KIT

Includes window rope tool, butyl sealer, plastic razor blade and rubber gloves



## STANDARD REAR WINDOW

Please read this! Rubber looks like this



- The rubber is the same all around, there are no corners
- The glass is larger than the opening
- The glass is installed from INSIDE of truck
- You are pulling rope from OUTSIDE of truck (B)
- The larger part of the rubber (D) goes INSIDE truck
- The smaller part of rubber (C) goes OUTSIDE truck

If you install it backwards, then call and tell us there is something wrong with rubber or that glass is too big for hole, etc well then... We know you did not read the directions, and, you owe us lunch. If you are a professional glass installer, we will be expecting dinner

Wrap around rear window installs like windshield, both are installed from outside of truck. In this order; rubber on glass, trim in rubber, entire assembly into truck

