

CIGAR LIGHTER

CUP HOLDERS, 1956

Slides into ash tray opening. Very trick!! Pops out quick & easy to go back to original ash tray. Holds two of todays large cups. Covered in high quality automotive vinyl

- Black.....A-0126-BK.....\$39.95 ea
- Standard colors, grey, redA-0126-Color.....\$45.95 ea
- Flag style as shown.....A-0126-FG\$45.95 ea
- Match your interior or paint color.....A-0126-SPO.....\$49.95 ea

Bench seat consoles with cup holders see page 14

ASH TRAY Used housings, bases, covers etc available if needed.

- Knob 1953-55.....1005\$4.50 ea
- Installation screws 1953-55.....81020\$1.50 set

POWER PORT PLUG Billet aluminum ... 1010-P.....\$20.00 ea

Add your choice of Knobs

- Stock black1004\$5.00 ea
- Billet alum bushed1000-ABT\$12.00 ea
- Polished.....1000-APT\$12.00 ea

CIGARETTE LIGHTER, POWER PORT ASSEMBLY

Actually works! Complete assembly with correct knob and wiring

- Cigarette lighter, 12-volt.....1003-A.....\$19.75 ea
- With lighted trim ring.....1003-L\$22.50 ea
- Ring wires to dash lights and may require enlarging original hole
- Element only.....1003-EL.....\$8.50 ea
- Socket only, no knob1003-NO.....\$17.00 ea
- 6-volt.....6V-1003.....\$28.50 ea
- Cigarette lighter knob1003\$7.00 ea

For Original lighter, includes polished trim



RATING PLATE, ID PLATE

Perfect reproduction. We offer plates stamped correctly as exact reproduction of original. For stamped plate we need copy of proof of ownership, and all plate information. VIN number must be correct and verified, but engine, trans, rear axle, etc information can reflect your changes. If you need help with the codes, give us a call. Processing this plate takes 8 to 12 weeks, for rush 7 to 10 business day service Add \$40.00. I know it is expensive but that's what they charge us. 1953-55 Rating plate is installed on glove box door facing passenger when door is open. 1956 plate was on door post.

Locating the VIN number: Start on passenger side just in front of cab mount, under inner fender, Is on top of the frame rail but can be anywhere along frame up to front x-member. 1953 can be on front x-member instead of frame.

RATING PLATE HELP:

GVW: Gross vehicle weight

- 1953-54 4800 pounds
- 1955-56 5000 pounds

Wheelbase

- Standard pick-up 6-1/2' box..... 110"
- Express with 8' box..... 118"
- Express with 9' box 130"
- Panel body.....110"

Hp @ rpm & engine letter code

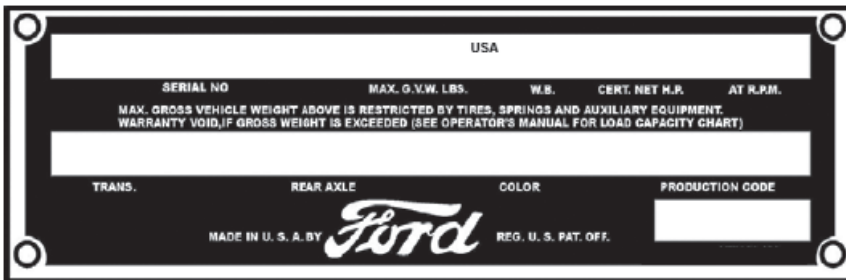
- 1953 215.D=101@3500
- 239.R=118@3500
- 1954..... 223.D=115@3900
- 239.V=130@4200
- 256.Z=138@3900
- 1955..... 223.D=118@3900
- 239.V=132@4200
- 256.Z=140@3900
- 1956..... 223.D=133@4000
- 272.V=167@4400
- 272.R=158@3800

Transmission code

- Standard 3 speed 3
- Heavy duty 3 speed..... 3HD
- Overdrive..... 3OD
- Synchronized 4 sp..... 4SYN
- Fordomatic..... AUTO

Rear axle

- 1953-54 3.91..... 4.09..... 4.27
- 1955-56 3.92..... 4.09..... 4.27



- 1953-56 STAMPED PLATE.....B-10091-STMP \$125.00 ea
- RUSH SERVICE.....B-10091-RUSH\$40.00 ea
- INSTALLATION SCREWS
- Stainless.....80091\$1.00 set
- Polished stainless.....80091-PS\$3.00 set
- MERCURY RATING PLATEB-10092-STMP \$175.00 ea

