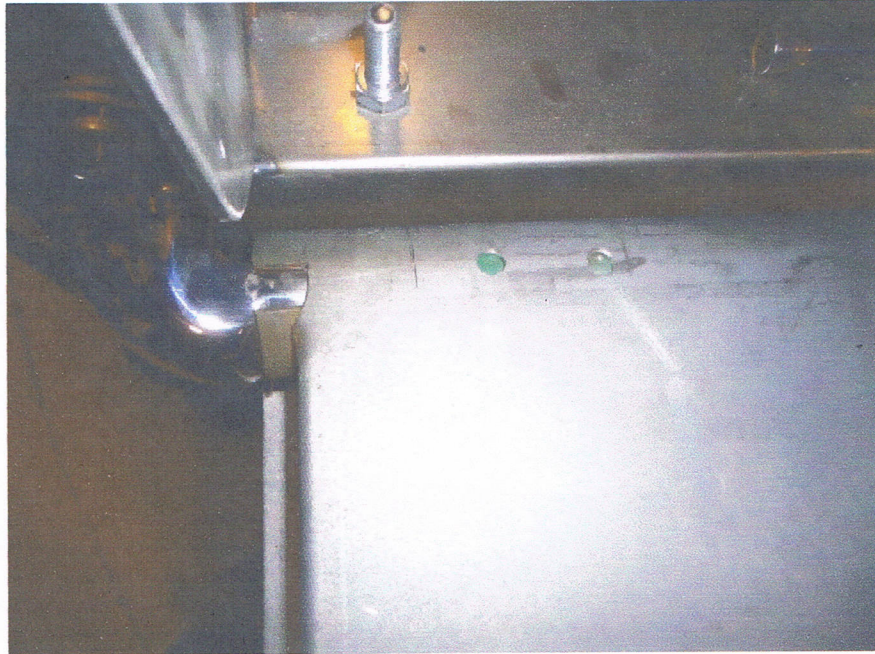
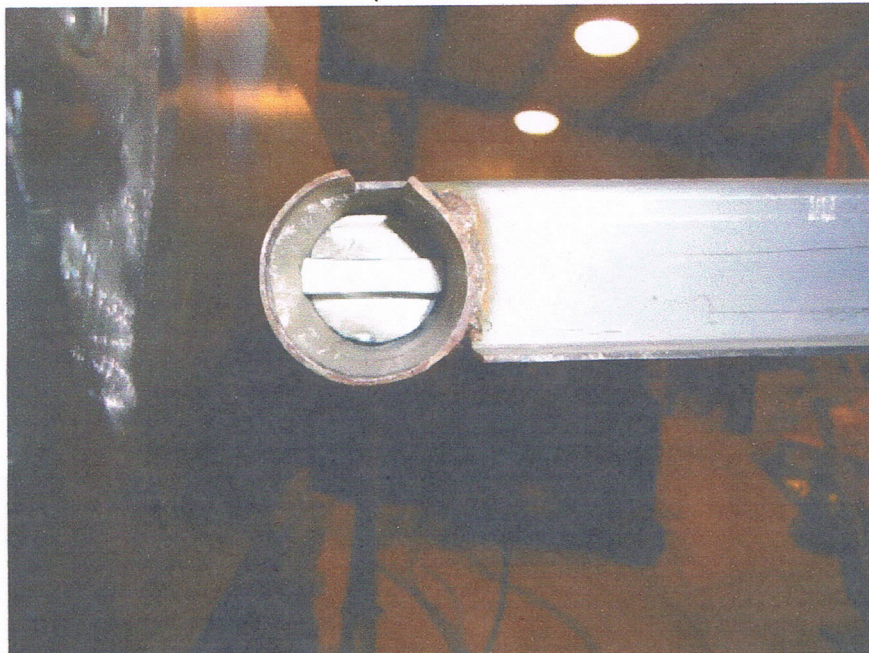


Legens Hot Rod Tailgate Support Concealment Hinges

1. Starting with the bottom roll on the tailgate, measure 2" in from the outside edge and drill four $\frac{1}{4}$ " holes around the circumference.
2. Measure 3" in from the bottom edge and drill four more $\frac{1}{4}$ " holes around the circumference. There should be a total of 8 holes per side.

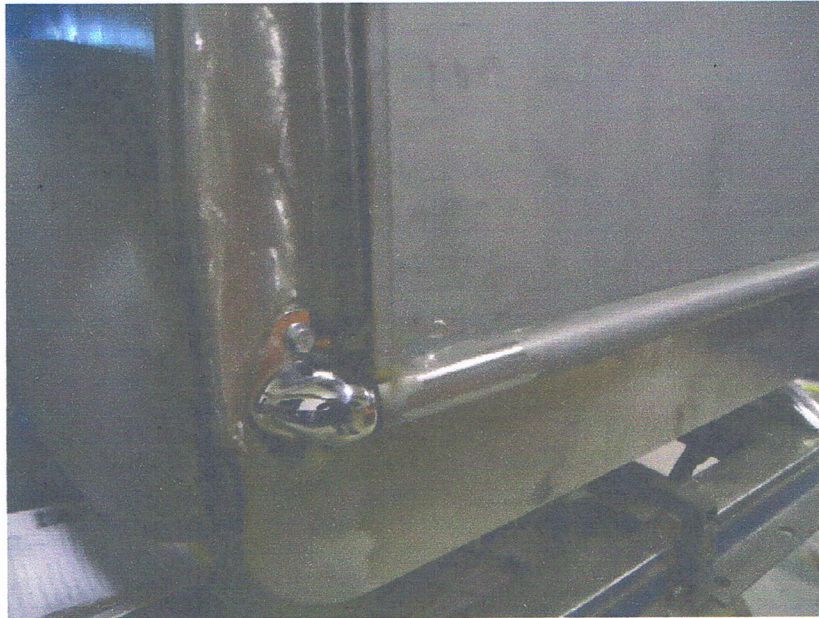


3. Slide the slotted piece into the bottom roll of the tailgate $\frac{1}{4}$ " to $\frac{1}{2}$ " and mount one hinge to the bed post.

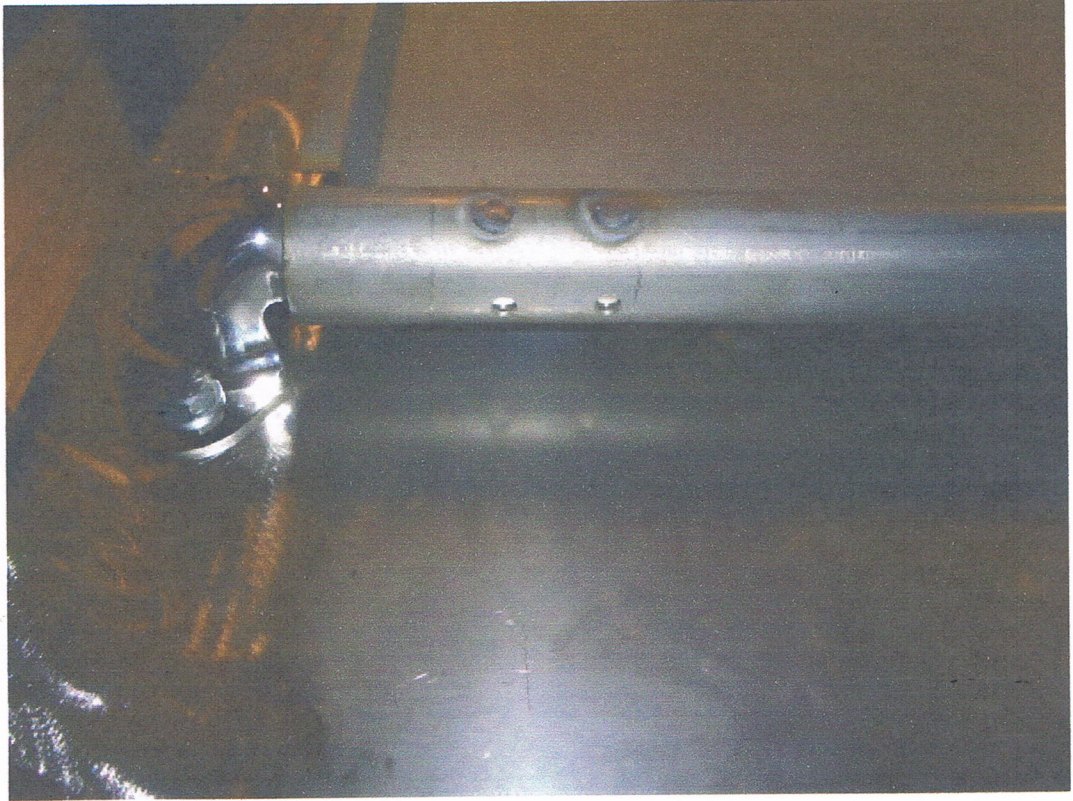


4. Slide the tailgate into the hinge, making sure the slotted piece lines up with the notches on the hinge. It will be easier if you attach just the hinge on the opposite side temporarily.
5. Let the tailgate down past 90 degrees to make sure the slotted piece aligns correctly with the notches on the hinge then raise the tailgate back up to the closed position making sure the tailgate to bed gap is equal from top to bottom.

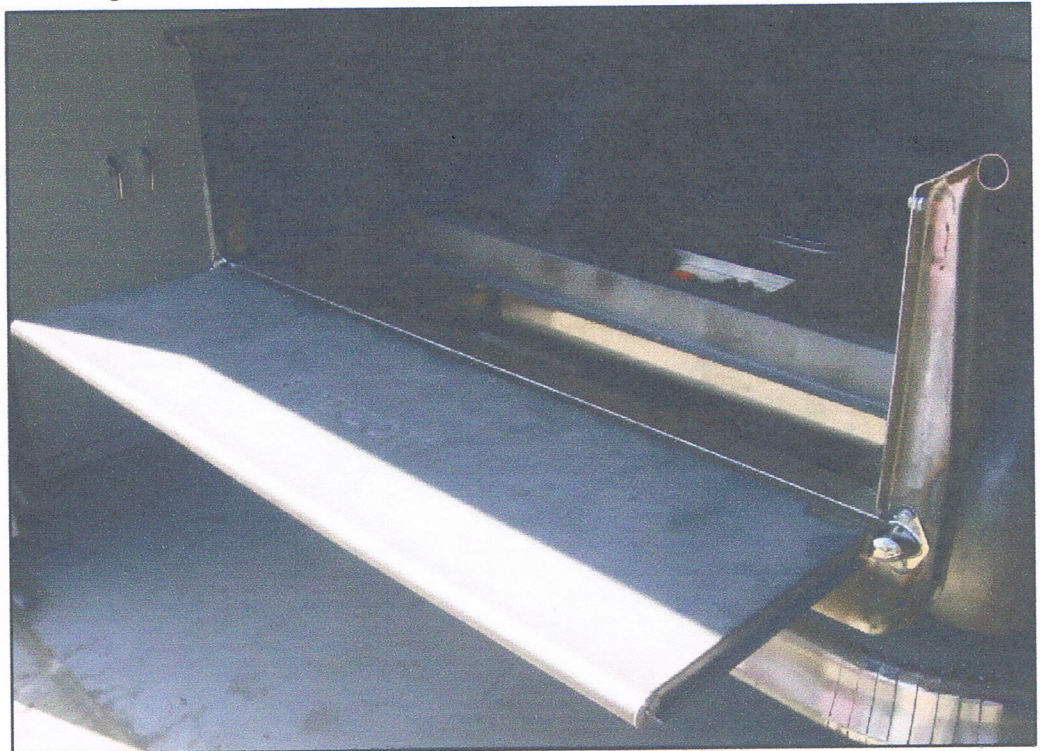
***This step is crucial to aligning the tailgate.**



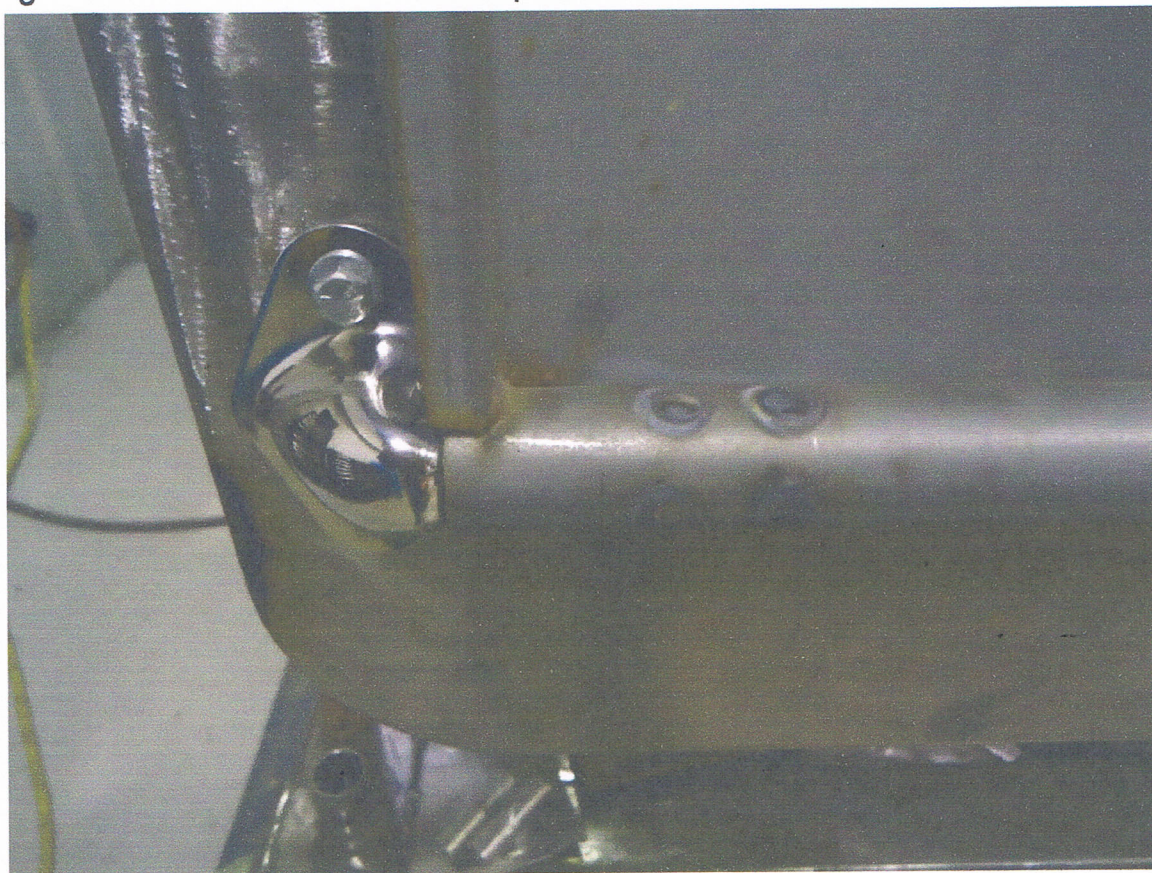
6. Make sure the tailgate is fully closed and tack weld the slotted piece to the tailgate using one of the holes previously drilled. Only one hole needs to be welded for set up.



7. Repeat these steps for the other side then check fitment and operation. Make sure the tailgate is at 90 degrees when open.



8. Once you are satisfied with the fitment in the closed and open position, fully weld all of the remaining holes and dress the welds for paint.



**This kit is not designed to support loads of more than 50lbs on the tailgate!
Overloading may cause damage to your bed post.**

Congratulations! You have just installed a clean and smooth Legens Hot Rod Tailgate Support Concealment Hinges. See our web site for more cool and innovative products.

www.legenshotrod.com

Legens Hot Rod

731.587.6002