



Y2K BILLET FRONT HOOD FLIP KIT INSTRUCTIONS

Check out the instructions page at midfifty.com for a full install video!

Congratulations on purchasing the finest front hinge kit made. We are very proud of this kit, and you will be, too! We have tried to make these instructions as easy to follow as possible and most of the kit is pre-assembled to help you out.

TOOLS REQUIRED

Basic set of tools (wrenches, sockets, hex wrenches...you know what we mean), electric drill, 1/8", 1/4" and 3/8" bits, and a round file.

STEP ONE

When the hood closes with the new hinge, it locks down with the stock hood latch. The safety latch, or secondary latch is no longer necessary, so remove it.

STEP TWO

Remove the hood and stock hinges. We recommend that you set the hood back on and adjust the fenders to line up all the front body parts. Remember, the hood fits to the cab, then the fenders are moved around to fit to the hood. Take the hood back off.

STEP THREE

With the hood upside down, remove the stock hood supports and brackets. To remove the brackets, rub them with some sandpaper (this will show you where the 3 spot welds are) see photo A. Drill a 1/8" hole all the way through the center of each of the 3 spot welds. Then use the 3/8" bit and drill only halfway through the bracket at each spot weld. See Photo B1 and B2. You will be able to pry off the bracket now (sometimes it takes a little twisting, so don't be shy!).

STEP FOUR

Bolt in the new hood braces. First, set the length by adjusting the rod end to show 1/4" of exposed thread. See photo C. Bolt the rod ends into the stock holes at the back of the hood, with the bars laying toward the front of the hood. See photo D. Assemble the pivot bar into the two hood braces. Put 3 washers

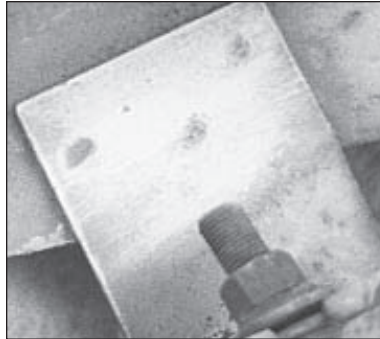


PHOTO A

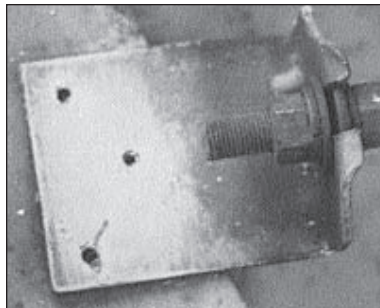


PHOTO B1

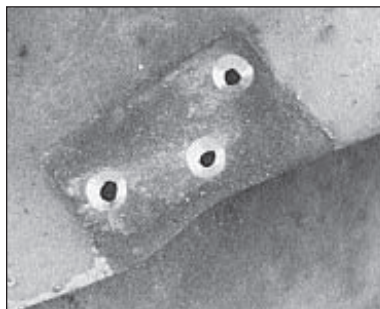


PHOTO B2

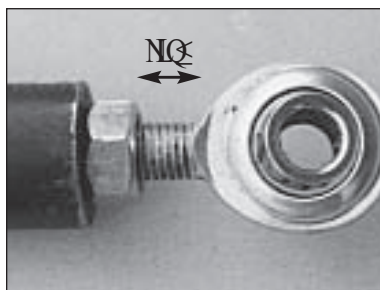


PHOTO C



PHOTO D

between the rod and the mount on each bar. See photo E. With the pivot bar mocked up, center the front ends of the hood braces by measuring from the inside or outside hood

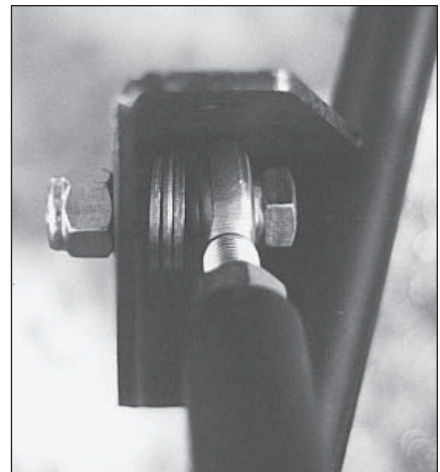


PHOTO E

edge to the mount flange on the hood brace, moving them until both sides measure the same. See photo F. Clamp the mount flanges and drill out three 1/4" holes in each side (these holes will not line up with the holes you drilled to remove old brackets). See photo G. Slide the thread plate under and bolt