

NOTE: Wood Lays On Top Of Front Bed Panel Lip.

### **STEP ONE**

Attach box front to sides either by welding, rivets or bolts. The holes are not drilled on the flanges because this is an option. Most people would rather weld it to give it a smoother look. Make sure sides are lined up evenly on box front before welding.

### **STEP TWO**

Attach rear cross member to back of box. Ends fit inside stake pockets. Make sure flat side of cross member is facing up. The 2 7/16 bolts, nuts and washers will bolt through the side holes later when the bed is set on the frame and bolted through the frame.

### **STEP THREE**

Place the box on end. Front of bed down. Put in front cross member making sure the 5/16 holes are pointing up and facing front of truck. Use 5/16 bolts. Square up box again.

### **STEP FOUR**

Working with bed boards, work with outside boards first and then towards the middle. Line up, then put skid strips in with the 5/16 carriage bolts through the strips in between boards with fender washers or cross members. Make sure the box is squared up so the boards end up evenly spaced. Do not tighten bolts down until completely finished and squared up. When using fender washers the bolts go between the wood strips out of the back and a fender washer and nut are put in place. There are no holes drilled in the edge boards until the box is completely lined up.

### **STEP FIVE**

Hold down bolts, go into the drilled holes in the wood and on a 1953-56 the round head 2" bolts go in the skid strips at front bed panel.

### **STEP SIX**

Set box on frame of truck. Line up everything. Tighten everything up. Put tailgate on using the 1/4" bolts for tailgate hinges.





1-800-252-1956

FRONT OF BED

1" WIDE X 1/16" DEEP RABBIT

DRIVER (LEFT SIDE)

MAKE (1)

2 5/8" FROM THIS SIDE

MAKE (1)

ALL BOARDS 3/4" X 5 3/4" X 78"

MAKE (4)

MAKE (4) BOARDS LIKE THIS

24"  
(TYP.)

29 1/4"  
(TYP.)

24 3/4"  
(TYP.)

54"

MAKE (1)

2 5/8" FROM THIS SIDE

1 7/8" DIA. "FORRESTER BIT" X 1/8" DEEP  
COUNTERSUNK HOLE & 7/16" CENTER HOLE  
THRU ALL 4 PLACES

PASSENGER (RIGHT SIDE)

MAKE (1)

1" WIDE X 1/16" DEEP RABBIT

5/8" WIDE X 1/8" DEEP  
RABBIT

1 1/4" X 1/16" DEEP

RABBIT (TYPICAL ALL BOARDS)

NOTE: RABBIT WAS ORIGINAL, BUT THE BED LOOKS BETTER  
W/OUT THE RABBIT & REAR SILL ON TOP OF BEDWOOD

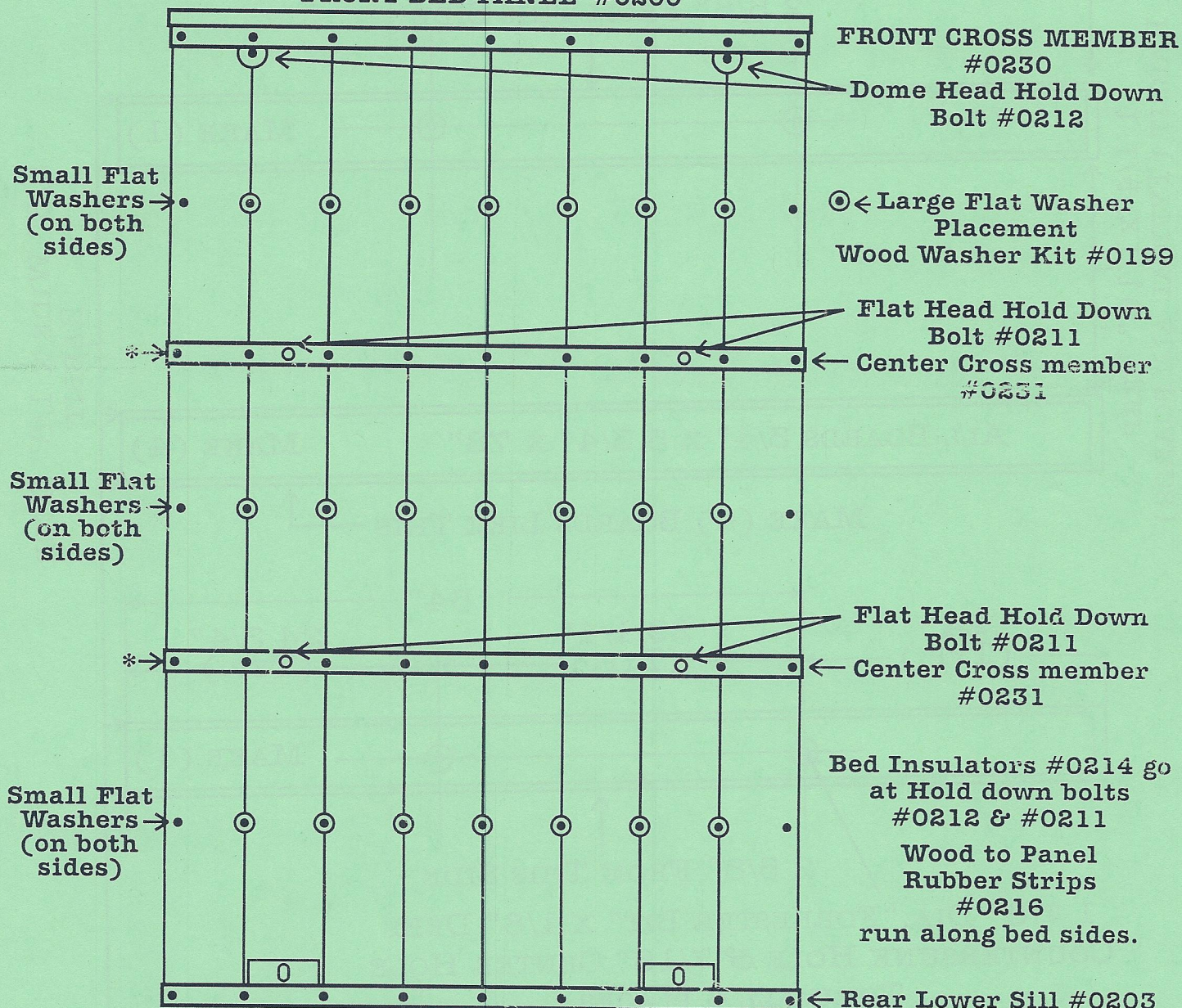




# BED BOLT AND WASHER PLACEMENT

1-800-252-1956

## BED BOLT AND WASHER PLACEMENT FRONT BED PANEL #0200



\* Note, If bolt kit has both Long and Short bolts,  
Use Longer bolts at Cross members.